

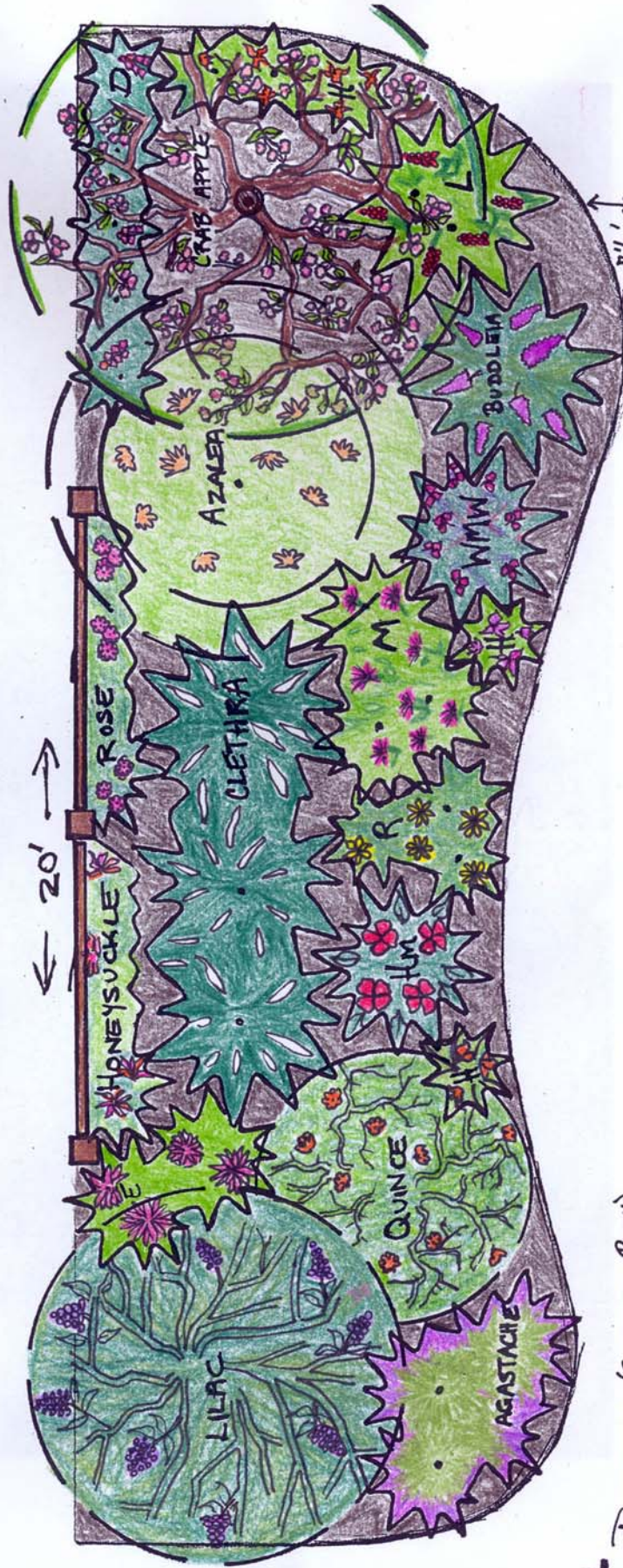
SOUTH

# BUTTERFLY AND HUMMINGBIRD BORDER

EAST

WEST

STREET SIDE OR NEIGHBOR



Qty

- 1 • Buddleia (Butterfly Bush)
- 1 • Rose - Climbing 'William Baffin'
- 5 • Digitalis (Foxglove) (D)
- 1 • Hibiscus moscheutos (Hm)
- 3 • Monarda (Bee Balm) (M)
- 2 • Eupatorium maculatum (E)  
(Joe Pye Weed)

- 1 • Honeysuckle Vine
- 1 • Azalea Flame or narcissiflora Hummingbird
- 3 • Clethra Hummingbird
- 1 • Chaenomeles (Quince)  
(Maintain Low)
- 1 • Malus (Crab Apple)

- 1 • Syringa (Lilac) 'Common Purple Lilac' or 'Beauty of Moscow' (R)
- 3 • Rudbeckia 'Goldsturm' (R)
- 3 • Agastache foeniculum
- 1 • Hemerocallis 5 (H)
- 1 • Weigela 'Midnight Wine' (WmW)
- 1 • Tina 'Guinevere', 'Red Jade' or 'Coral Burst'